

STOCK CONDITION SOFTWARE

Deluxe Windows brief description and information

Hardware PC - Windows 9x, NT, 2000, XP. 256 MBytes minimum, 512 recommended.

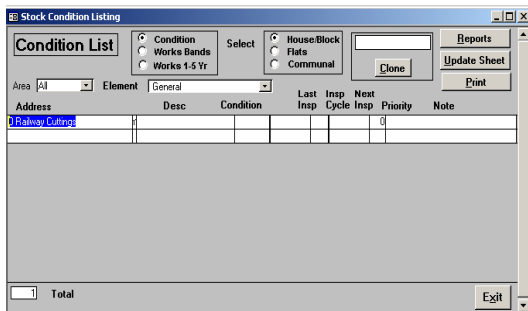
Terminal Services supported.

Program Written in Microsoft Access supplied with 'run time' module.

Capacity 1000 accounts each ledger set, multiple ledgers.

Operation Full access to standard windows entry and printing conventions. Full interactive ability with other Windows packages, mailmerge, export, Object linking etc.

Security Multilevel password entry system

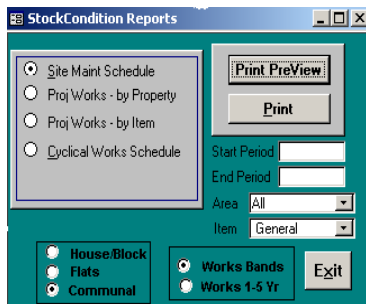


Records

- Address codes - text - see comments below on CHICS
- Element / Item - text - eg bathroom, roof
- Description - text - construction, material, size etc
- Photos - in desired format - CHICS provides links to relevant record
- Inspection date - preferably dd/mm/yy - normally initially roughly all the same
- Condition rating - text - good, fair, poor, etc - categories as you wish
- Condition description - text - extended description
- Condition note - text - anything of immediate or special interest outside description.
- Priority - number - 0 to 9 to assign importance of work - 9 could be urgent.
- Projected works - text - brief eg renew, repair, overhaul
- Year of works - year - from inspection
- Projected cost - bands - £ - up to five time bands being updated to 6 defined by yourselves normally between 1 and 30 years
- Projected costs - yrs - £ - 6 fields years 0 (current) to 5
- Life - number - years, planned life of element

Optional

- Energy rating - for energy audit - only applies to particular elements obviously.
- Inspected by - person/company
- Cyclical decoration/inspection period - months or years
- Lifetime/overhaul cycle - years- against each element for automatic cost projection iteration.
- Base year of element life/overhaul as above
- Photos - in various formats - accessed in CHICS through Microsoft Photo Editor



Reports

- Check Lists for site visits
- Cost analysis/projections by element, property etc.
- Detail of properties works



Features

- Overview on screen by property or element
- Toggle to individual properties
- simple overview with extensive notes facility
- Direct links back to works/repair history, property spec, photos/imagined documents

~ cost From £125 (+ VAT) according to no. of units in management~

~ Service Performance specification, support, updates all from £322 (+ VAT) per annum at present rates. ~



CHICS
 'Clock House'
 Combyne
 Axminster
 Devon EX13 8SX
 Tel.: 01297 443511